



COMPANY WITH
QUALITY SYSTEM
CERTIFIED BY DNV GL
= ISO 9001 =

COLLETTORE OLIO
OIL MANIFOLD
ÖLVERTEILERBLOCK

CODICE/CODE/CODE

CMA0140-BA-0 -OL

N° STAZIONI
NO. OF STATIONS
ANZAHL STATIONEN

- * A- alluminio (standard)
- S- acciaio (su richiesta)
- X- acciaio inox (su richiesta)
- * A- aluminium (standard)
- S- steel (on request)
- X- stainless steel (on request)
- * A- aluminium (standard)
- S- stahl (auf Anfrage)
- X- edelstahl (auf Anfrage)

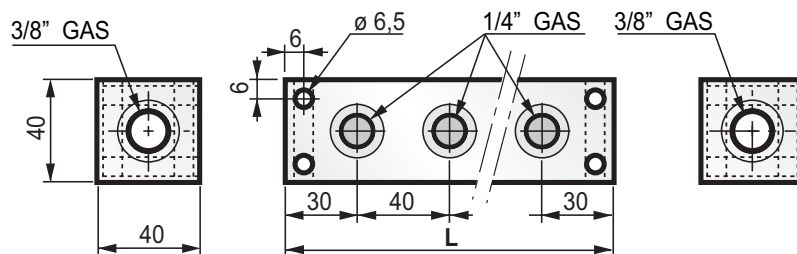
N° (N° STAZIONI) (NO. OF STATIONS) (ANZAHL STATIONEN)	L	PESO WEIGHT GEWICHT kg
2	100	0,36
3	140	0,51
4	180	0,66
5	220	0,81
6	260	0,97
7	300	1,12
-	-	-
-	-	-

COLLETTORE SCHEMA PARALLELO
PARALLEL SCHEME MANIFOLD
VERTEILERBLOCK MIT PARALLELSCHEMA



FOTO/PICTURE/PICTURE

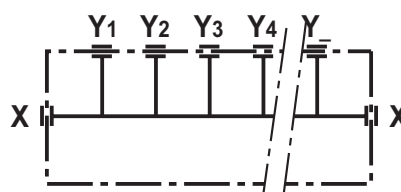
CMA0140-BA-05-OL



MASSIMA PRESSIONE DI LAVORO: 250 BAR (LEGA DI ALUMINIO)
MAXIMUM OPERATING PRESSURE: 250 BAR (ALUMINIUM ALLOY)
MAXIMALER BETRIEBSDRUCK: 250 BAR (ALUMINIUMLEGIERUNG)

TRATTAMENTO SUPERFICIALE ALLUMINIO: ANODIZZAZIONE NEUTRA SATINATA
ALUMINIUM SURFACE TREATMENT: NEUTRAL SATIN ANODIZING
OBERFLÄCHENBEHANDLUNG ALUMINIUM : NEUTRAL SATIN ANODISIERUNG

SCHEMA - DIAGRAM - SCHEMA



via S. Quirico, 201/H
50013 Campi Bisenzio - FI
www.oleorama.it
oleorama@oleorama.it
export@oleorama.it

sch 2